

SAMPLE NAME: Terpene Sour Suver

Other

CULTIVATOR / MANUFACTURER
Business Name:
License Number:
Address:
DISTRIBUTOR / TESTED FOR
Business Name: Earthy Now

License Number:
Address:
SAMPLE DETAIL
Batch Number:
Sample ID: 230104P032

Date Collected: 01/04/2023

Date Received: 01/04/2023

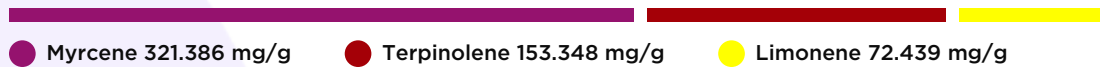
Batch Size:
Sample Size: 7.5 units

Unit Mass:
Serving Size:


Scan QR code to verify authenticity of results.

TERPENOID ANALYSIS - SUMMARY

39 TESTED, TOP 3 HIGHLIGHTED

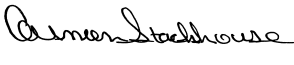
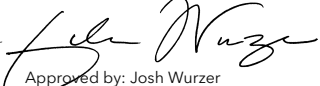
Total Terpenoids: 78.8245%


For quality assurance purposes. Not a Regulatory Hemp Lab Test Report. These results relate only to the sample included on this report. This report shall not be reproduced, except in full, without written approval of the laboratory.

Sample Certification: California Code of Regulations Title 4 Division 19. Department of Cannabis Control Business and Professions Code. Reference: Sections 26100, 26104 and 26110, Business and Professions Code.

Decision Rule: Statements of conformity (e.g. Pass/Fail) to specifications are made in this report without taking measurement uncertainty into account. Where statements of conformity are made in this report, the following decision rules are applied: PASS - Results within limits/specifications, FAIL - Results exceed limits/specifications.

References: limit of detection (LOD), limit of quantification (LOQ), not detected (ND), not tested (NT)



 LQC verified by: Carmen Stackhouse
 Job Title: Senior Laboratory Analyst
 Date: 01/07/2023
 Approved by: Josh Wurzer
 Job Title: President
 Date: 01/07/2023



Terpenoid Analysis

Terpene analysis utilizing gas chromatography-flame ionization detection (GC-FID).

Method: QSP 1192 - Analysis of Terpenoids by GC-FID

1 Myrcene
 A monoterpene with a fragrance that can be described as peppery, spicy, herbal, floral and woody. Although it has a pleasant odor, it is typically used by the perfume industry as precursor for developing other fragrances. Found in hops, houttuynia, bay, thyme, lemon grass, mango, verbena, cardamom, citrus...etc.

2 Terpinolene
 Also known as δ -terpinene, it is of four isomers of the monoterpene Terpinene. It has a fragrance that can be described as fresh, woody, piney, herbal with a hint of lemon. Found in conifers, cumin, apple, rosemary, sage, tea tree, lilac, nutmeg...etc.

3 Limonene
 A monoterpene with a fragrance that can be described as orangey, citrusy, sweet and tart. It is most commonly found in nature as D-Limonene and is a primary contributor to the distinct scent of orange peels, from which it is commonly derived. Found in numerous pines, red maple, silver maple, aspens, cottonwoods, hemlocks, sumac, cedar, junipers...etc.

Deviations¹ see Notes

TERPENOID TEST RESULTS - 01/07/2023

COMPOUND	LOD/LOQ (mg/g)	MEASUREMENT UNCERTAINTY (mg/g)	RESULT (mg/g)	RESULT (%)
Myrcene	0.008 / 0.025	±3.2139	321.386	32.1386
Terpinolene	0.008 / 0.026	±2.4382	153.348	15.3348
Limonene	0.005 / 0.016	±0.8041	72.439	7.2439
β -Ocimene	0.006 / 0.020	±1.5135	60.540	6.0540
β -Caryophyllene	0.004 / 0.012	±1.6668	60.173	6.0173
α -Pinene	0.005 / 0.017	±0.1387	20.699	2.0699
α -Humulene	0.009 / 0.029	±0.5058	20.231	2.0231
β -Pinene	0.004 / 0.014	±0.1753	19.694	1.9694
Terpineol	0.009 / 0.031	±0.7488	15.666	1.5666
Linalool	0.009 / 0.032	±0.2356	7.959	0.7959
trans- β -Farnesene	0.008 / 0.025	±0.2168	7.855	0.7855
α -Phellandrene	0.006 / 0.020	±0.0596	5.618	0.5618
Δ^3 -Carene	0.005 / 0.018	±0.0509	4.584	0.4584
α -Terpinene	0.005 / 0.017	±0.0517	4.454	0.4454
γ -Terpinene	0.006 / 0.018	±0.0374	2.767	0.2767
Fenchol	0.010 / 0.034	±0.0708	2.351	0.2351
Guaiol	0.009 / 0.030	±0.0600	1.636	0.1636
Eucalyptol	0.006 / 0.018	±0.0299	1.519	0.1519
Camphene	0.005 / 0.015	±0.0095	1.058	0.1058
Caryophyllene Oxide	0.010 / 0.033	±0.0312	0.872	0.0872
α -Bisabolol	0.008 / 0.026	±0.0279	0.673	0.0673
Valencene	0.009 / 0.030	±0.0319	0.595	0.0595
Borneol	0.005 / 0.016	±0.0164	0.500	0.0500
Sabinene	0.004 / 0.014	±0.0043	0.465	0.0465
p-Cymene	0.005 / 0.016	±0.0087	0.418	0.0418
Nerolidol	0.006 / 0.019	±0.0172	0.352	0.0352
Sabinene Hydrate	0.006 / 0.022	±0.0056	0.186	0.0186
Isoborneol	0.004 / 0.012	±0.0048	0.152	0.0152
Citronellol	0.003 / 0.010	±0.0014	0.036	0.0036
Nerol	0.003 / 0.011	±0.0007	0.019	0.0019
Fenchone	0.009 / 0.028	N/A	ND	ND
Isopulegol	0.005 / 0.016	N/A	ND	ND
Camphor	0.006 / 0.019	N/A	ND	ND
Menthol	0.008 / 0.025	N/A	ND	ND
Pulegone	0.003 / 0.011	N/A	ND	ND
Geraniol	0.002 / 0.007	N/A	ND	ND
Geranyl Acetate	0.004 / 0.014	N/A	ND	ND
α -Cedrene	0.005 / 0.016	N/A	ND	ND
Cedrol	0.008 / 0.027	N/A	ND	ND
TOTAL TERPENOIDS			788.245 mg/g	78.8245%

NOTES

1. Deviations: Preparation mass outside of normal acceptance range